

Today in Children's Religious Education (CRE)

Welcome to a very special day in CRE! Our own Alden MacNulty (9½ years old) will be leading a discussion on climate change from a planetary perspective. Thanks to Alden for volunteering to teach and to Nancy Perna for assisting. All are welcome to join Alden and Nancy in the Perkins Room for today's unique CRE program.

Allie and Lena are available in the nursery to care for babies and small children. To find the nursery, go through the leather door to the right of the pulpit and cross through the chapel. The nursery is on your left before the stairs.

Today's Share the Plate: The LGBT Asylum Task Force

The Lesbian, Gay, Bisexual, and Transgender (LGBT) Asylum Task Force is a ministry of Hadwen Park Church (Worcester) and a community-based organization dedicated to supporting and empowering LGBTQI individuals who are seeking asylum in the United States.

Asylum seekers who file for asylum in the United States are not permitted to work until they are granted a work permit and social security number, a process that can take more than a year. During that time, the Task Force strives to provide housing and financial support.

Their goal is to educate the public in an effort to change policy around the globe so that someday no LGBTQI person will need to seek asylum because of their sexual orientation or gender identity.

Thank you for your generosity!

Service is Our Gift

Candles Coordinators, *John O'Connor (with Ali Jablonsky)*
Candles Chaplain, *Art Judge*
Lead Greeter, *Rachel Corey*
Lead Usher, *Philip Roberts*
Worship Coordinator, *Darrell Waters*
Assistant Treasurer, *Philip Roberts & Scott Schroeder*

At Your Service:

- * If you would like a large print order of service or hymnal or a Braille hymnal
- * If you are having trouble hearing the service and would appreciate an assistive listening device
- * If you have mobility challenges and would like assistance

Any usher will be happy to help!

Urban Church Awareness

Remember to be mindful of your belongings, and throughout the week, please help to keep the outside doors to the church secure.

OUR UNITARIAN UNIVERSALIST FAITH

Arlington Street Church is an historic congregation (1729) with a progressive faith. Long on the cutting-edge of movements for social justice, we affirm the inherent worth and dignity of every being. All are welcome!

CONGREGATIONAL LEADERSHIP

The Prudential Committee is the elected governing board of Arlington Street Church.

THE PRU MEMBERS ARE:

Al Ingram (chair) / Rick Cresta (vice-chair) / Joe Alen Dan Brotman / Lois Hartsough / Eve Lauria Deb Pontes / Ted Rudinsky / Connie Scanlon

OFFICERS OF THE CORPORATION ARE:

Art Nava (treasurer) / Tori Bell & Gaby Whitehouse (co-moderators) / Doc Kinne (clerk)

SPECIAL CONSIDERATIONS FOR SPECIAL NEEDS

FM amplification headsets are available from the ushers. Please do not remove them from the sanctuary. **Accessible** entry is via the ramp on the Arlington Street alley at the right-hand side of the front doors to the Church. **Braille** hymnals are available! Please ask an usher for assistance.

TIFFANY WINDOWS

The 2015 restoration of Arlington Street Church's Tiffany stained glass windows was made possible through the generous support of this congregation, an anonymous donor, and the George B. Henderson Foundation. The guided tour program for our historic church and its unique Tiffany stained glass windows is closed for the winter and will open again in the spring of 2018. More information is available at www.asctiffany.org.

ALLELUIA!

At Arlington Street Church, we raise a hand and circle two fingers above our heads to signal joyous affirmation.

PARKING AT ARLINGTON STREET CHURCH

Parking on Sundays is available at the Back Bay Garage for a discount. Discount coupons are available at the Welcome Table after worship. Additional parking may be available on Arlington Street past "The Castle."

Staff Directory

Parish Ministers

Rev. Kim K. Crawford Harvie, *Senior Minister*
Rev. George G. Whitehouse, *Minister at Large*
Beth Robbins,
Interim Director of Family Ministry
Erica Rose Long,
Interim Assistant Director of Family Ministry
Chaplain, Massachusetts General Hospital

Community Ministers

Dr. Arthur Judge,
Hospital Chaplain, retired
Rev. Clyde Grubbs,
Spiritual Director
Rev. Fred Small,
Minister for Climate Justice
Rev. Joanna Lubkin,
Chaplain, Wellesley College
Rev. Vera O'Brien,
Chaplain, Brigham and Women's Hospital

Intern Ministers

Karlene Griffiths Sekou,
Black Lives Matter, Boston
Liz Weber,
UU Church of Reading, Massachusetts

Music

Mark David Buckles, *Director of Music*
Xuan He, *Organist and Pianist*
Rodger Clinton Vine, *Artist in Residence*

Choir Section Leaders

Katie Elledge, *Soprano*
Katherine Maysek, *Alto*
Daniel Rosensweig, *Tenor*

Administration

Jeffrey Bouchard, *Congregational Administrator*
Adam Berman, *Bookkeeper*
Brad Nobles, *Sexton*
Laurinda O'Connor, *Publications*

Arlington Street Church, *Unitarian Universalist*
351 Boylston Street, Boston, Massachusetts 02116-3303

Office Hours: Monday – Friday, 9:00 AM to 5:00 PM Phone: 617-536-7050 • Fax: 617-536-2729
Email: Office@ASCBoston.org • Web: www.ASCBoston.org

PLEASE SILENCE YOUR CELL PHONE. THANK YOU!



**ARLINGTON
STREET CHURCH**
Unitarian Universalist

SUNDAY, DECEMBER 3RD, 2017
THE IMMIGRANT EXPERIENCE
ADVENT 1: HOPE

8 Unitarian Universalist PRINCIPLES

1. The inherent **WORTH** and **DIGNITY** of every being
2. **JUSTICE**, **EQUITY**, and **COMPASSION** in all relations
3. **ACCEPTANCE** of one another and encouragement of **SPIRITUAL GROWTH**
4. A free and responsible search for **TRUTH** and **MEANING**
5. The right of **CONSCIENCE** and the use of the **DEMOCRATIC** process
6. The goal of world community with **PEACE**, **LIBERTY**, and **JUSTICE** for all
7. **RESPECT** for the **INTERDEPENDENT WEB** of which we are a part
8. Building **BELOVED COMMUNITY** by dismantling racism and oppression within ourselves and our world

Arlington Street Church
Boston, Massachusetts
Founded in 1729

Gathered in love and service for justice and peace

Arlington Street Church, Unitarian Universalist

Boston, Massachusetts

SUNDAY, DECEMBER 3RD, 2017

You are invited to share your sorrows and joys with the congregation by filling out a Candle Card in the back pew on the right-hand side of the sanctuary. Candle Cards are collected until the end of greetings.

PRELUDE

Voluntaries John Stanley (1712 - 1786)
Xuan He, organ

INTROIT

The Immigrant Experience John Kramer (b. 1973)
I. Welcome
II. The Bosom of America
Andrew Papas, baritone
please see insert for lyrics and program notes

WELCOME, CHALICE LIGHTING, AND GREETINGS

The flaming chalice is the symbol of our free faith.

LIGHTING THE ADVENT WREATH ~ ADVENT 1: HOPE

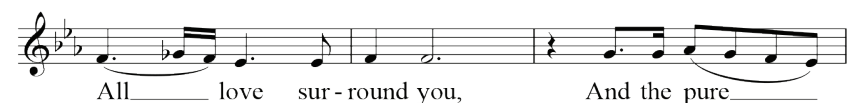
Sharon Gentges, Alden MacNulty, and Rohn MacNulty

*HYMN 226

People, Look East

CHILDREN'S BLESSING

Longtime Sun Mike Heron (b. 1942)
from *A Very Cellular Song* arranged: Mark David Buckles (b. 1980)



At this time, all children are welcome to join the Children's Religious Education program!

**You are invited to stand as you are willing and able.*

COMMUNITY CANDLES OF SORROW & JOY

Sanctuary John W. Thompson and Randy Scruggs (b. 1953)
text adapted: Crawford Harvie/Buckles
music arranged: Mark David Buckles (b. 1980)

Open my heart to be a sanctuary
All made holy, loved and true
With thanksgiving, I'll be a living
Sanctuary for you

AFFIRMATION AND COVENANT

Love is the spirit of this congregation, And service is our gift. This is our great covenant: To dwell together in peace, To speak our truths in love, And to help one another.	El amor es el espíritu de nuestra congregación Y el servicio es nuestro regalo. Esto es a lo que nos comprometemos: Convivir en paz, Hablar nuestras verdades con amor, Y ayudarnos los unos a los otros.
---	---

*HYMN 188

Come, Come, Whoever You Are

SERMON

Angels Unawares Rev. Kim K. Crawford Harvie

SILENT REFLECTION, MEDITATION, AND PRAYER

ANTHEM

The Immigrant Experience John Kramer (b. 1973)

- III. Where Do You Come From?
- IV. The Immigrant Struggle
Daniel Rosensweig, tenor
- V. Journey from the South

OUR SHARED RESPONSIBILITY

During the offertory, you are invited to open your heart and engage in the spiritual practice of generosity. For 288 years, the abundant support of our community has allowed Arlington Street Church to remain a beacon for liberal religious values in downtown Boston. Your gifts in the Sunday plate sustain both the church and the larger community – half of the offering is shared with a partner in our mission of love, service, justice, and peace. As a convenient option, you may text the word GIVE to 617-300-0509 or scan the QR code.



Thank you for your stewardship and support!

OFFERTORY

The Immigrant Experience John Kramer (b. 1973)

- VI. We Remember, We Cry
Katie Elledge, soprano
- VII. Finale

PARISH HIGHLIGHTS

*HYMN

This Land is Your Land Woody Guthrie (1912 - 1967)

Chorus

*This land is your land, this land is my land
From California, to the New York Island
From the redwood forest, to the Gulf Stream waters
This land was made for you and me*

As I was walking that ribbon of highway
I saw above me that endless skyway
I saw below me a golden valley
This land was made for you and me.

I've roamed and I've rambled and I followed my footsteps
To the sparkling sands of her diamond deserts
While all around me a voice was sounding
This land was made for you and me.

Chorus

There was a big high wall there that tried to stop me.
The sign was painted, said "Private Property."
But on the backside, it didn't say nothing.
This land was made for you and me.

In the squares of the city, in the shadow of the steeple,
By the relief office, I seen my people.
And some are grumbling, and some are wondering
If this land's still made for you and me.

The sun comes shining as I was strolling
The wheat fields waving and the dust clouds rolling
The fog was lifting, a voice come chanting
This land was made for you and me.

Nobody living can ever stop me,
As I go walking that freedom highway;
Nobody living can ever make me turn back.
This land was made for you and me.

Chorus

*BENEDICTION AND EXTINGUISHING THE CHALICE

The Mission of Our Faith

Rev. Dr. William F. Schulz (b. 1949), adapted

*RECESSIONAL (sung twice; please join in!)

When You Walk From Here text: Linnea Good
music: Tom Witt, arranged: Mark David Buckles

*When you walk from here, When you walk from here,
Walk with justice, Walk with mercy, walk humbly in God's care.*

POSTLUDE

Rondeau, from *Abdelazer* Henry Purcell (1659 - 1695)
Xuan He, organ

continued on back